

# THE VILLAGE MOORPARK

S H O P P I N G C E N T E R

Southwest Corner of Miller Parkway and New Los Angeles Avenue  
Moorpark, California

Prepared By:



*LaCaze Consulting and Design*  
2601 Airport Drive, Suite 300  
Torrance CA 90505

[(1) 310,534,3311  
[(1) 310.534.3003

## Sign Criteria

Subject	Page
Guidelines, Directory, and Vendors	1
Purpose and Intent	2
General Landlord / Tenant Requirements	2
General Specifications	2
Prohibited Signs	3
Sign Types	3

## Graphic Exhibits

	Site Plan	A
	Building Elevations	B
<b>W</b>	Tenant Wall Signs	C
<b>AS</b>	Arcade Signs	D
<b>M1</b>	Entrance Monument Sign	E
<b>M2</b>	Corner Monument Sign	F
<b>BA</b>	Building Address Numbers	G
<b>SID</b>	Suite Identification	H

THE VILLAGE  
*at*  
MOORPARK  
SHOPPING  
CENTER

### SIGN PROGRAM

**Location:**

Southwest Corner  
Miller Parkway and  
New Los Angeles Avenue  
Moorpark, California

**Date:**

December 12, 2007



*LaCaze Consulting  
and Design*  
2601 Airport Drive  
Suite 300  
Torrance CA 90505

[T] 310.534.3311  
[F] 310.534.3003

I N D E X

SIGN GUIDELINES, DIRECTORY, PARCEL INFORMATION, AND APPROVED SIGN VENDORS.

A. SIGN GUIDELINES

**MANUFACTURE:** All signs must be U.L. Approved and conform to the Electrical code and any municipal building codes.

**COLORS & FINISHES:** Colors and finishes must be of highest quality over properly primed surfaces and are subject to owner approval. Four face colors have been approved for tenant wall signage and must be used unless tenant is part of a multi-location chain and has a nationally recognized trademarked logo.

**INTERIOR SIGNS:** Interior signs may not be visible from a public street and are not regulated by this program unless they are pertinent to or attached to a window.

**REQUIRED SIGNS:** Tenant is required to provide and maintain in good condition at least one wall sign and suite identification sign in conformance with this program during the term of tenant's lease.

**CITY SIGN PERMITS:** All signs, prior to installation, shall obtain City permit.

B. DIRECTORY

ARCHITECT:

**Poliquin Kellogg Design Group**

6400 Canoga Avenue  
Suite 215  
Woodland Hills, CA 91367  
(818) 313-6813  
(818) 313-6817 - Fax

C. APPROVED SIGN VENDORS



**Sign Methods, Inc.**

Contact: Karen LaCaze-Gabriel

1749 E. 28th St.  
Signal Hill, CA 90755  
(800) 655-4336  
(562) 989-5755  
(562) 427-6875 - Fax

THE VILLAGE  
*At*  
MOORPARK  
SHOPPING  
CENTER

**SIGN PROGRAM**

**Location:**

Southwest Corner  
Miller Parkway and  
New Los Angeles Avenue  
Moorpark, California

**Date:**

December 12, 2007



*LaCaze Consulting  
and Design*

2601 Airport Drive  
Suite 300  
Torrance CA 90505

[T] 310.534.3311

[F] 310.534.3003

**Guidelines, Directory  
and Vendors**

## A. PURPOSE AND INTENT

The purpose of this sign program is to ensure that the signage at The Village At Moorpark reflects the integrity and overall aesthetic values of the Landlord and the City of Moorpark. Conformity with this program will be strictly enforced, and any non-conforming signs will be removed by the Landlord at the expense of the tenant.

## B. GENERAL LANDLORD / TENANT REQUIREMENTS

1. Prior to manufacture of any sign in the Village At Moorpark, the Tenant shall submit to Landlord for written approval, two copies of the detailed sign drawings. These drawings shall include the building elevation to which the signs are to be attached, sign dimensions, graphics, location, colors, and method of attachment. This approval by Landlord must be obtained prior to submittal to the City of Moorpark. A copy of Landlord approval of requested tenant sign shall be turned in to the City in addition to the required City application for approval of signage.
2. All signs shall be reviewed for conformance with this criteria and overall design quality. Approval or disapproval of sign submittals based on aesthetics of design shall remain the sole right of the Landlord.
3. Prior to the manufacturing and installation of any sign, the Tenant shall obtain a sign permit from the City of Moorpark.
4. The tenant shall pay for all signs, related materials, and installation fees (including final inspection costs).
5. Tenant fascia signs will be limited to tenant's name. The use of brand name logos (i.e. "Levis", etc.) will not be allowed on the sign.
6. It is the responsibility of the tenant's sign company to verify all conduit and transformer locations and service access prior to fabrication.
7. In the event a tenant vacates his premise, it is his responsibility to patch all holes and paint surface(s) to match existing color of fascia. In addition, the tenant shall provide a blank panel for any freestanding sign he occupies.
8. Landlord reserves the right to periodically hire an independent electrical engineer, at Tenant's sole expense, to inspect the installation of all Tenant's signs. Tenants will be required to have any discrepancies and/or code violations corrected at Tenant's expense. Any code violations, requests for sign removals, or discrepancies not corrected within fifteen (15) days of notice, may be corrected by the Landlord at Tenant's expense.

9. All tenant signs shall be installed after City permits are secured, within 30 days of permitting.
10. Cooperative tenant advertising, signing or seasonal event signing will require a specialty event sign permit from the City of Moorpark prior to the event.

## C. GENERAL SPECIFICATIONS

1. Sign sizes shall be limited to maximum widths shown on tenant's elevation, and also shall not exceed the general sizes outlined.
2. Signs shall be fabricated per the specifications shown.
3. All signs and their installation shall comply with all local building and electrical codes.
4. All electrical signs will be fabricated by a U.L. approved sign company, according to U.L. specifications.
5. Sign company to be fully licensed with the City and State and shall have full workman's compensation and 1 million dollar general liability insurance.
6. All penetrations of exterior fascia are to be sealed watertight (color and finish to match existing building exterior).
7. All conduits, transformers, junction boxes and openings in building surfaces shall be fully concealed within the interior walls of the building. Exposed hardware shall be finished in a manner consistent with quality fabrication practices. No exposed raceways will be allowed.
8. Signs shall be placed in locations as shown on the elevations shown herein with Landlord approval.
9. All signs shall have its sign permit number, name of fabricator, date of installation and voltage in a visible location.
10. Any tenant sign left thirty (30) days after vacating premises shall become the property of the Landlord unless previous arrangements have been agreed upon by Landlord and tenant.
11. Shop tenant wall signs must consist of face-and-halo-illuminated channel letters as depicted in Exhibit 'I'. Major tenant wall signs may consist of face-and-halo-illuminated channel letters as depicted in Exhibit 'I' or standard internally-illuminated channel letters as depicted in Exhibit 'J'.

# THE VILLAGE At MOORPARK SHOPPING CENTER

## SIGN PROGRAM

### Location:

Southwest Corner  
Miller Parkway and  
New Los Angeles Avenue  
Moorpark, California

### Date:

December 12, 2007



*LaCaze Consulting  
and Design*  
2601 Airport Drive  
Suite 300  
Torrance CA 90505

[(T)] 310.534.3311  
[(F)] 310.534.3003

**Sign Criteria  
Sections A, B, & C**

D. PROHIBITED SIGNS

1. Signs Constituting a Traffic Hazard  
No person shall install or maintain, or cause to be installed or maintained, any sign which simulates or imitates in size, color, lettering or design any traffic sign or signal, or which makes use of the words "STOP", "LOOK", "DANGER" or any other words, phrases, symbols or characters in such a manner as to interfere with, mislead, or confuse traffic.
2. Signs in Proximity to Utility Lines  
Signs which have less horizontal or vertical clearance from authorized communication or energized electrical power lines than are prescribed by the Laws of the State of California are prohibited.
3. Painted letters will not be permitted.
4. Cabinet/floourescent illuminated signs will not be allowed.
5. Metal faced cabinet signs (except as part of a logo) are prohibited.
6. Externally illuminated signs are prohibited.
7. There shall be no rooftop signs.
8. There shall be no flashing, moving, or audible signs.
9. Signs must be architecturally compatible with the entire center and receive approval of Landlord and City zoning, planning and building departments. If planning department determines that a sign is not compatible with building architecture, it shall be deemed prohibited. If a sign is installed without City permits, it will be deemed prohibited and removed at Tenant's expense.
10. No sign shall project above the approved sign envelope.
11. Vehicle Signs  
Signs on or affixed to trucks, autamobiles, trailers, or other vehicles which advertise, identify, or provide direction to a use or activity not related to its lawful activity are prohibited.

12. Light Bulb Strings  
External displays, other than temporary decorative holiday lighting which consists of unshielded light bulbs are prohibited. An exception hereto may be granted by the Landlord when the display is an integral part of the design character of the activity to which it relates.
13. Billboard Signs are not permitted.
14. The use of a permanent sale sign is prohibited.  
The temporary use of these signs is limited to a thirty (30) day period and is restricted to signs (affixed to the interior of windows) which do not occupy more than twenty (20) percent of their respective window area. Each business is permitted a total of not more than ninety (90) days' of temporary signs per calendar year, subject to City approval.

THE VILLAGE  
*at*  
MOORPARK  
SHOPPING  
CENTER

**SIGN PROGRAM**

**Location:**

Southwest Corner  
Miller Parkway and  
New Los Angeles Avenue  
Moorpark, California

**Date:**

December 12, 2007



*LaCaze Consulting  
and Design*  
2601 Airport Drive  
Suite 300  
Torrance CA 90505

[T] 310.534.3311  
[F] 310.534.3003

**Sign Criteria  
Sections D & E**

THE VILLAGE  
*at*  
 MOORPARK  
 SHOPPING  
 CENTER

**SIGN PROGRAM**

**Location:**

Southwest Corner  
 Miller Parkway and  
 New Los Angeles Avenue  
 Moorpark, California

**Date:**

December 12, 2007



*LaCaze Consulting  
 and Design*  
 2601 Airport Drive  
 Suite 300  
 Torrance CA 90505

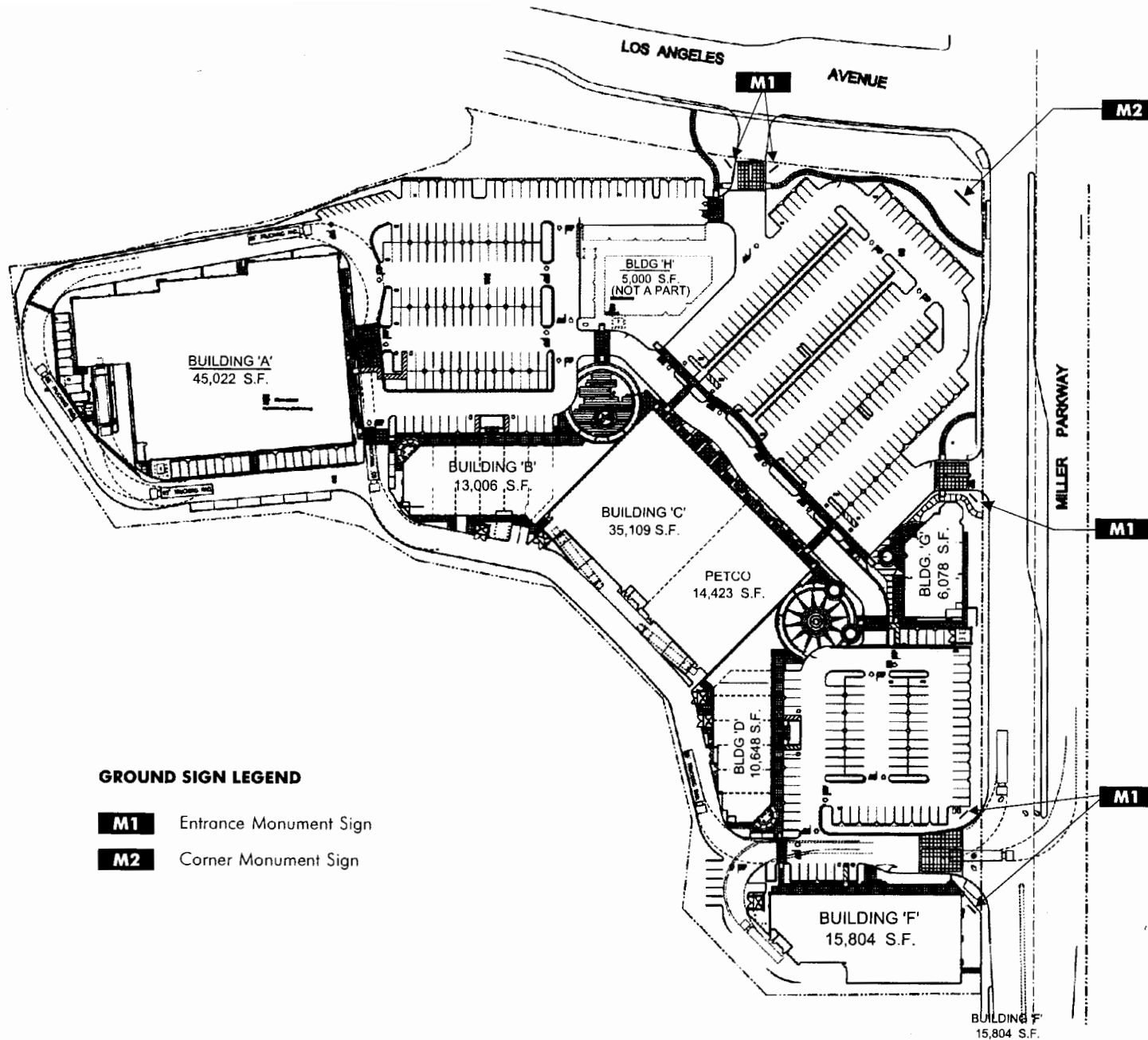
[T] 310.534.3311  
 [F] 310.534.3003



Scale: 1"=150'-0"

**SITE PLAN**

Exhibit A



**GROUND SIGN LEGEND**

- M1** Entrance Monument Sign
- M2** Corner Monument Sign

THE VILLAGE  
*At*  
 MOORPARK  
 SHOPPING  
 CENTER

**SIGN PROGRAM**

**Location:**

Southwest Corner  
 Miller Parkway and  
 New Los Angeles Avenue  
 Moorpark, California

**Date:**

December 12, 2007



*LaCaze Consulting  
 and Design*

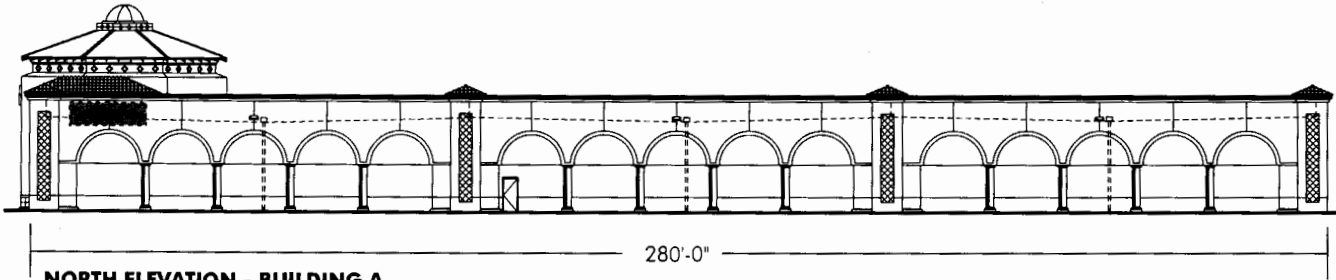
2601 Airport Drive  
 Suite 300  
 Torrance CA 90505

[1] 310.534.3311  
 [1] 310.534.3003

SCALE: 1"=40'-0"

**ELEVATIONS  
 BUILDING A**

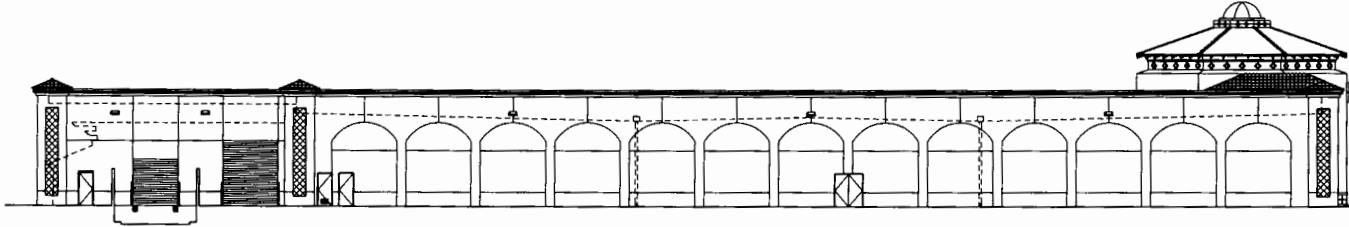
**Exhibit B-1**



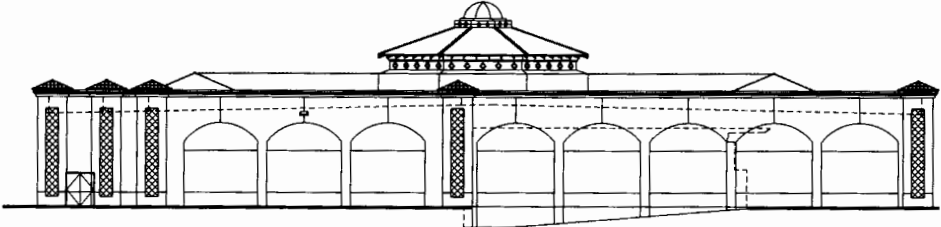
**NORTH ELEVATION - BUILDING A**



**EAST ELEVATION - BUILDING A**



**SOUTH ELEVATION - BUILDING A**



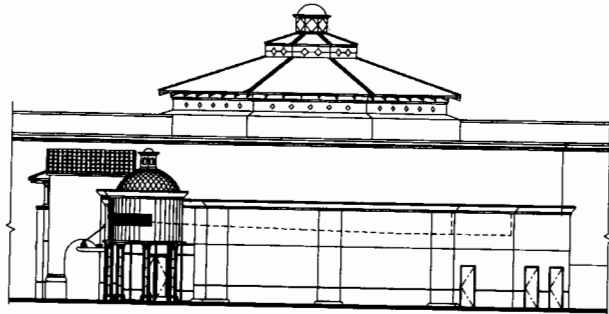
**WEST ELEVATION - BUILDING A**

**WALL SIGN LEGEND**

SYMBOL INDICATES POSSIBLE SIGN LOCATION (PRIMARY I.D.)

SYMBOL INDICATES POSSIBLE FUTURE SIGN LOCATION (ALLOWED ONLY IF SUITES ARE DIVIDED)



All frontage widths to be verified.



71'-0"

**BUILDING B - WEST ELEVATION**

**WALL SIGN LEGEND**

 SYMBOL INDICATES POSSIBLE  
 SIGN LOCATION

**THE VILLAGE**  
*at*  
**MOORPARK**  
 SHOPPING  
 CENTER

**SIGN PROGRAM**

**Location:**

Southwest Corner  
 Miller Parkway and  
 New Los Angeles Avenue  
 Moorpark, California

**Date:**

December 12, 2007



*LaCaze Consulting  
 and Design*  
 2601 Airport Drive  
 Suite 300  
 Torrance CA 90505

TEL 310.534.3311  
 TEL 310.534.3003

SCALE: 1/32"=1'-0"

**ELEVATIONS  
 BUILDING B**

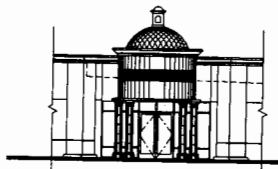
**Exhibit B-2**



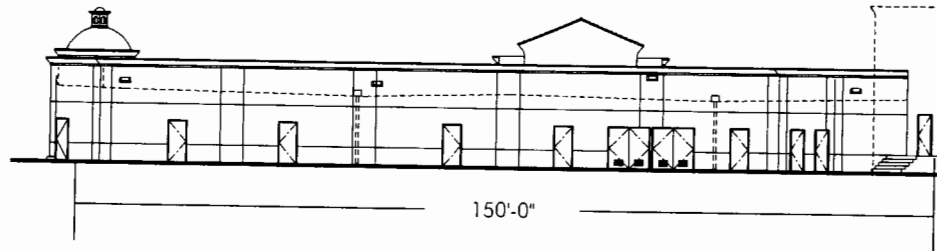
Suite 7 | Suite 6 | Suite 5 | Suite 4 | Suite 3 | Suite 2 | Suite 1

237'-0"

**BUILDING B - NORTH ELEVATION**



**BUILDING B - PARTIAL MAIN ENTRY ELEVATION**



150'-0"

**BUILDING B - SOUTH ELEVATION**

All frontage widths to be verified.



**THE VILLAGE**  
*at*  
**MOORPARK**  
 SHOPPING  
 CENTER

**SIGN PROGRAM**

**Location:**

Southwest Corner  
 Miller Parkway and  
 New Los Angeles Avenue  
 Moorpark, California

**Date:**

December 12, 2007



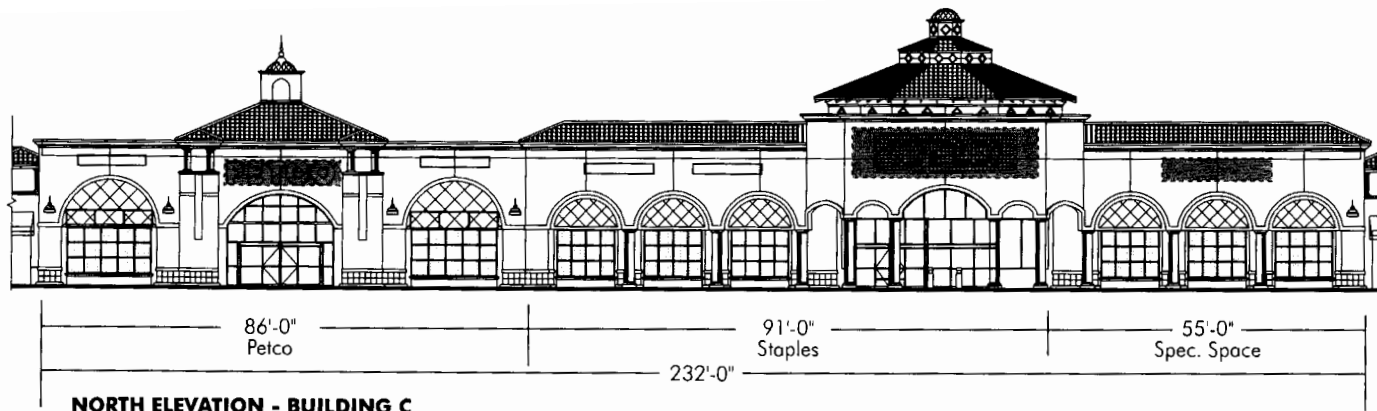
*LaCaze Consulting  
 and Design*  
 2601 Airport Drive  
 Suite 300  
 Torrance CA 90505

(1) 310.534.3311  
 (1) 310.534.3003

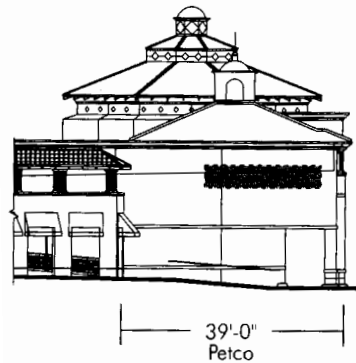
SCALE: 1/32"=1'-0"

**ELEVATIONS  
 BUILDING C**

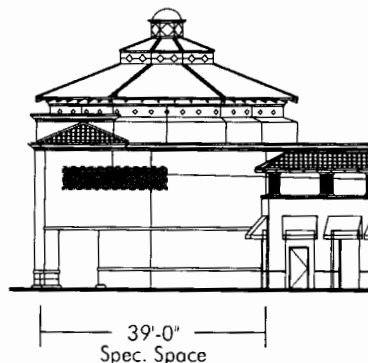
**Exhibit B-3**



**NORTH ELEVATION - BUILDING C**



**EAST ELEVATION - BUILDING C**

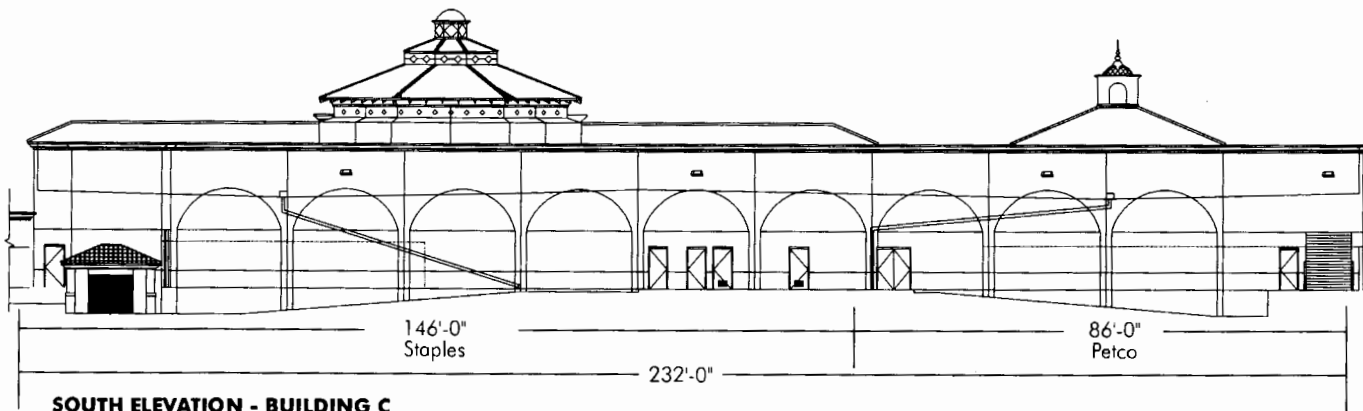


**WEST ELEVATION - BUILDING C**

**WALL SIGN LEGEND**

SYMBOL INDICATES POSSIBLE  
**WI** SIGN LOCATION (PRIMARY I.D.)

SYMBOL INDICATES POSSIBLE FUTURE SIGN  
 LOCATION (ALLOWED ONLY IF SUITES  
 ARE DIVIDED)



**SOUTH ELEVATION - BUILDING C**

All frontage widths to be verified.

THE VILLAGE  
*At*  
 MOORPARK  
 SHOPPING  
 CENTER

**SIGN PROGRAM**

**Location:**

Southwest Corner  
 Miller Parkway and  
 New Los Angeles Avenue  
 Moorpark, California

**Date:**

December 12, 2007



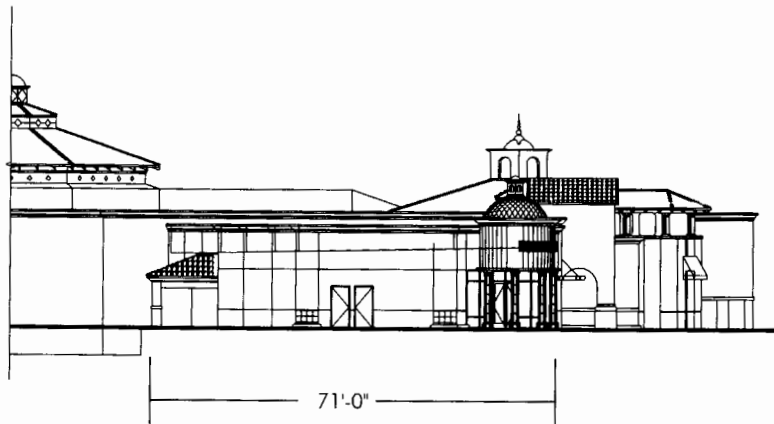
*LaCaze Consulting  
 and Design*  
 2601 Airport Drive  
 Suite 300  
 Torrance CA 90505

(t) 310.534.3311  
 (f) 310.534.3003

SCALE: 1/32"=1'-0"

**ELEVATIONS  
 BUILDING D**

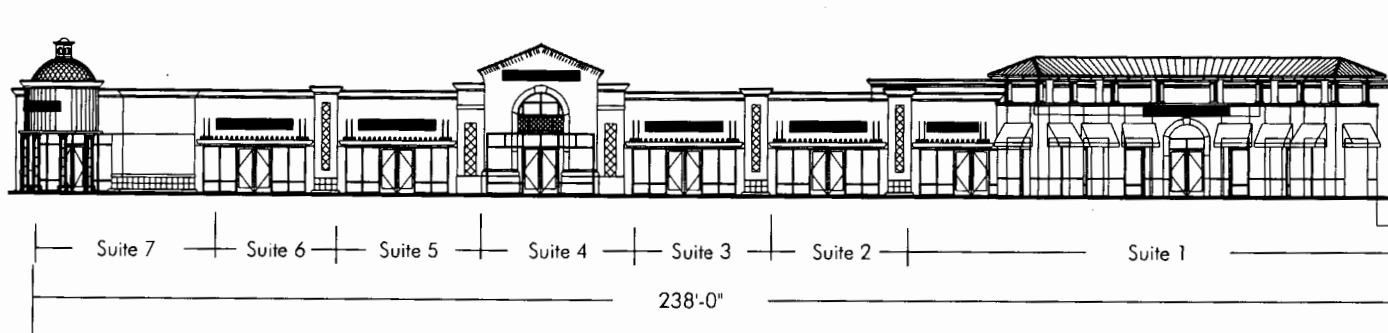
**Exhibit B-4**



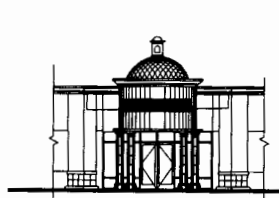
**BUILDING D - SOUTH ELEVATION**

**WALL SIGN LEGEND**

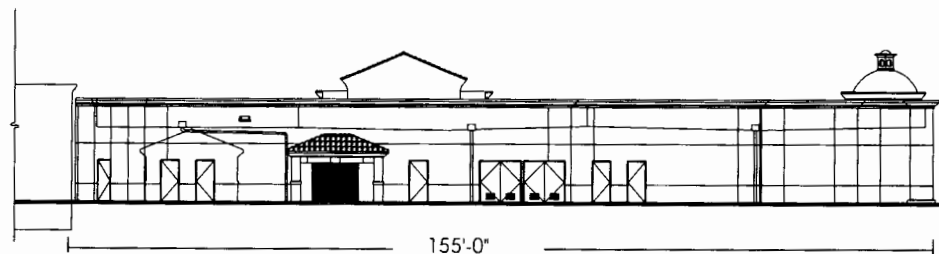
SYMBOL INDICATES POSSIBLE  
**W2** SIGN LOCATION



**BUILDING D - EAST ELEVATION**



**BUILDING D - PARTIAL MAIN ENTRY ELEVATION**



**BUILDING D - WEST ELEVATION**

All frontage widths to be verified.

**THE VILLAGE**  
*at*  
**MOORPARK**  
 SHOPPING  
 CENTER

**SIGN PROGRAM**

**Location:**

Southwest Corner  
 Miller Parkway and  
 New Los Angeles Avenue  
 Moorpark, California

**Date:**

December 12, 2007



*LaCaze Consulting  
 and Design*

2601 Airport Drive  
 Suite 300  
 Torrance CA 90505

[P] 310.534.3311  
 [F] 310.534.3003

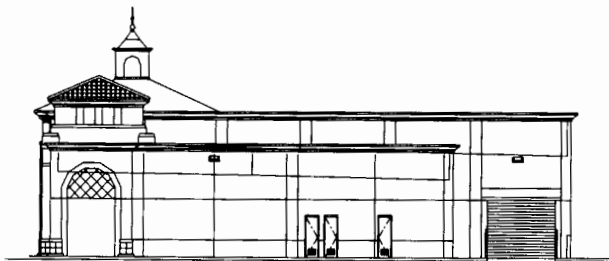
SCALE: 1/32"=1'-0"

**ELEVATIONS  
 BUILDINGS E/F**

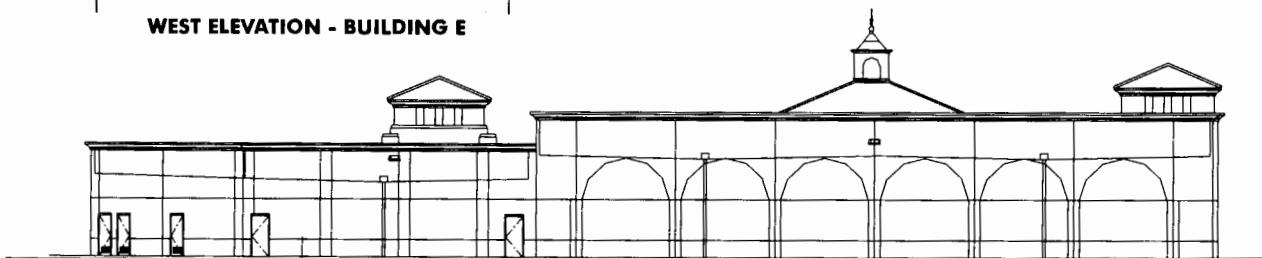
**Exhibit B-5**



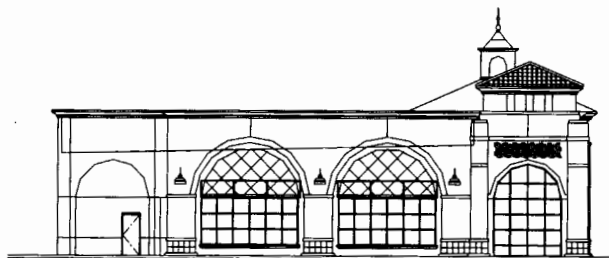
**NORTH ELEVATION - BUILDINGS E & F**



**WEST ELEVATION - BUILDING E**



**SOUTH ELEVATION - BUILDINGS E & F**



**EAST ELEVATION - BUILDING F**

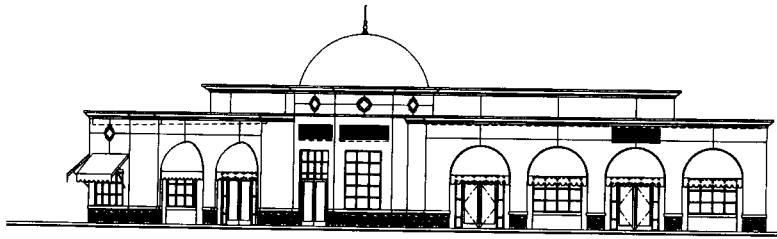
**WALL SIGN LEGEND**

SYMBOL INDICATES POSSIBLE  
**W1** SIGN LOCATION (PRIMARY I.D.)

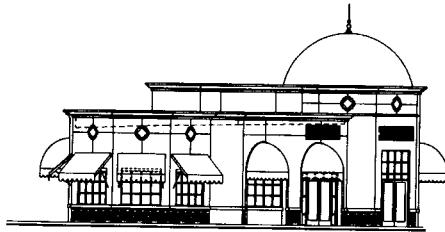
SYMBOL INDICATES POSSIBLE FUTURE SIGN  
 LOCATION (ALLOWED ONLY IF SUITES  
 ARE DIVIDED)

SYMBOL INDICATES POSSIBLE  
**W2** SIGN LOCATION

All frontage widths to be verified.

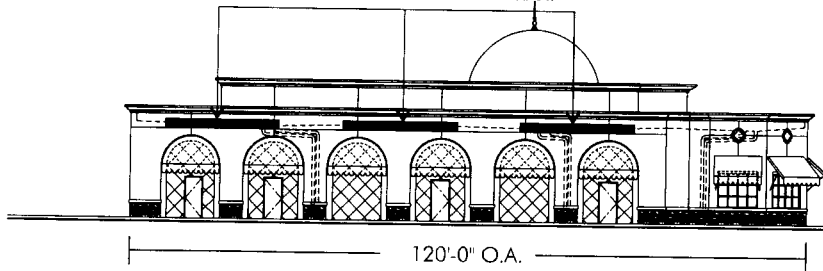


**WEST ELEVATION - BUILDING G**

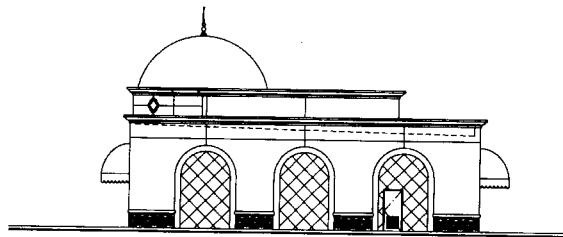


**NORTH ELEVATION - BUILDING G**

NOTE: 18" OVERALL HEIGHT MAX.





**EAST ELEVATION - BUILDING G**



**SOUTH ELEVATION - BUILDING G**

**WALL SIGN LEGEND**


  
 SYMBOL INDICATES POSSIBLE
   
 SIGN LOCATION

All frontage widths to be verified.

**THE VILLAGE**  
*At*  
**MOORPARK**  
 SHOPPING  
 CENTER

**SIGN PROGRAM**

**Location:**

Southwest Corner  
 Miller Parkway and  
 New Los Angeles Avenue  
 Moorpark, California

**Date:**

December 12, 2007



*LaCaze Consulting  
 and Design*  
 2601 Airport Drive  
 Suite 300  
 Torrance CA 90505

(P) 310.534.3311  
 (F) 310.534.3003

SCALE: 1/32"=1'-0"

**ELEVATIONS  
 BUILDING G**

Exhibit B-6

**Sign Type W1**

**MAJOR TENANT WALL SIGNS (Applies to tenants with greater than 10,000 s.f. leased space)**

- Quantity: Each tenant may display one sign on the front elevation and one additional sign on a side or rear elevation that faces a street or parking lot, as indicated in elevation exhibits of this document.
- Content: Tenant I.D. sign: Tenant business name and / or logo. Secondary copy sign(s): Not allowed for individual tenants.
- Maximum Sign Area: Signage per elevation may not to exceed one square foot per lineal foot of leased elevation width. This includes Tenant I.D. sign and any secondary copy signage.
- Maximum Letter Height: Forty-eight (48) inches.
- Maximum Logo Height: Fifty-four (54) inches.
- Maximum Lines of Copy: Two (2).
- Maximum Length: Seventy-five (75) percent of Tenant's leasehold width.
- Sign Type: Tenants may opt for either standard internally-illuminated channel letters/logo or face-and-halo illuminated channel letters/logo.

Standard internally-illuminated channel letters specifications: Individual channel letters fabricated from aluminum, with .063 aluminum returns, 3/16" white acrylic faces, and 3/4" trimcap retainer. Illumination to be neon. Letters to be from 5" to 8" deep, and installed spaced 1/2" off building face. Logos to be fabricated and installed identically as letters.

Face-and-halo-illuminated channel letters specifications: Individual 5" deep channel letters fabricated from aluminum, with .063 aluminum returns, 3/16" white acrylic faces, 3/4" trimcap retainer, and 3/16" clear Lexan back lense. Letters to be installed pin-mounted 1-1/2" off building face. Logos to be fabricated and installed identically as letters.

- Illumination: Internal 30ma neon face and halo illumination.
- Installation: As indicated above per sign type, with remote or self-contained transformer.
- Letter Style: Nationally recognized Corporate logo style or custom design as approved by Landlord and City of Moorpark.
- Colors: Trimcap and returns must be bronze.
- Faces are white acrylic, which may be left white or may be overlaid with translucent vinyl. Letters must utilize only one color of vinyl. Logo may utilize up to three colors of vinyl, plus the white color of the face.

Approved vinyl colors:

- V1** Calon 2500-2390 "Bright Blue" translucent vinyl overelay
- V2** Calon 2500-33 "Red" translucent vinyl overelay
- V3** Calon 2500-125 "Golden Yellow" translucent vinyl overelay
- W** White (acrylic left natural)

THE VILLAGE  
*At*  
MOORPARK  
SHOPPING  
CENTER

**SIGN PROGRAM**

**Location:**

Southwest Corner  
Miller Parkway and  
New Los Angeles Avenue  
Moorpark, California

**Date:**

December 12, 2007



*LaCaze Consulting  
and Design*

2601 Airport Drive  
Suite 300  
Torrance CA 90505

[(] 310.534.3311  
[(] 310.534.3003

**MAJOR TENANT  
WALL SIGN**

**Exhibit C-1**

**Sign Type W2**

**MINOR TENANT WALL SIGNS (Applies to tenants with less than 10,000 s.f. leased space)**

- Quantity: Each tenant may display one sign on the front elevation and one additional sign on a side or rear elevation that faces a street or parking lot, as indicated in elevation exhibits of this document.
- Content: Tenant business name and / or logo.
- Maximum Sign Area: Signage per elevation may not to exceed one square foot per lineal foot of leased elevation width.
- Maximum Letter Height: Eighteen (18) inches. *Note: The Community Development Director may approve up to a maximum of 24" sized letters with a maximum logo size of 24" for nationally recognized tenants which have corresponding registered trademarks, on one line of copy.*
- Maximum Logo Height: Twenty-four (24) inches. Exception: Signs on East side of Building 'G' (facing Miller Parkway) are limited to 18 inch high logo.
- Maximum Lines of Copy: Two (2). Maximum 30 inches overall height allowed for stacked copy. Exception: Signs on East side of Building "G", (facing Miller Parkway) may have one (1) or two (2) lines of copy not to exceed a total height of 18 inches and optional 18 inch high logo.
- Maximum Length: Seventy-five (75) percent of Tenant's leasehold width.
- Sign Type: Sign must consist of face-and-halo illuminated channel letters/logo.  
  
Face-and-halo-illuminated channel letters specifications: Individual 5" deep channel letters fabricated from aluminum, with .063 aluminum returns, 3/16" white acrylic faces, 3/4" trimcap retainer, and 3/16" clear Lexan back lense. Logos to be fabricated and installed identically as letters.
- Illumination: Internal 30ma neon face and halo illumination.
- Installation: To be installed pin-mounted 1-1/2" off building fascio, with remote or self-contained transformer.
- Colors: Trimcap and returns must be bronze.  
  
Faces are white acrylic, which may be left white or may be overlaid with translucent vinyl. Letters must utilize only one color of vinyl. Logo may utilize up to three colors of vinyl, plus the white color of the face.  
  
Approved vinyl colors:  
  - V1** Calon 2500-2390 "Bright Blue" translucent vinyl overelay
  - V2** Calon 2500-33 "Red" translucent vinyl overelay
  - V3** Calon 2500-125 "Golden Yellow" translucent vinyl overelay
  - W** White (acrylic left natural)
- Approved Letter Styles: (1) Futura Bold Condensed, (2) Helvetica Medium, (3) Brush Script, or (4) Cheltenham Bold Condensed. Nationally recognized Corporate logo style or custom design may be used if approved by Landlord. Font examples:

**Futura Bold Condensed**  
**Helvetica Medium**

*Brush Script*  
**Cheltenham Bold Condensed**



**SIGN PROGRAM**

**Location:**

Southwest Corner  
Miller Parkway and  
New Los Angeles Avenue  
Moorpark, California

**Date:**

December 12, 2007



*LaCaze Consulting  
and Design*  
2601 Airport Drive  
Suite 300  
Torrance CA 90505

[T] 310.534.3311  
[F] 310.534.3003

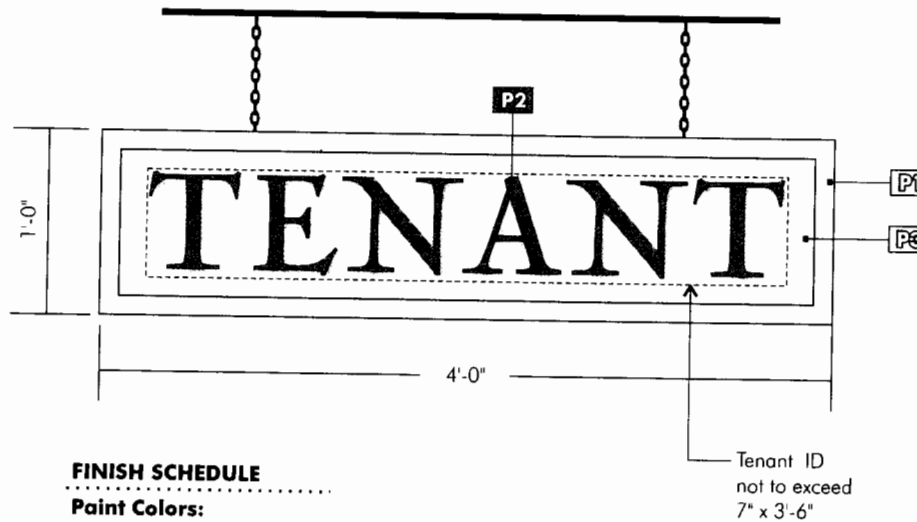
**MINOR TENANT  
WALL SIGN**

**Exhibit C-2**

**Sign Type AS**

**TENANT ARCADE SIGN**

- Quantity: 1 double-faced sign per Tenant, to be located near main public entrance.
- Dimensions: One (1) foot high by four (4) feet wide.
- Sign Area: Four (4) square feet.
- Construction: 2x redwood with sandblasted background (border and copy to be left raised).
- Colors: As indicated below.
- Illumination: No illumination of any kind allowed on or near these signs.



**FINISH SCHEDULE**

**Paint Colors:**

- P1** Dunn Edwards 5358 "Ivory Oats"
- P2** Dunn Edwards 6056 "Buffalo Herd"
- P3** Dunn Edwards 5325 "Regency Creme"

Colors shown are approximate. For actual colors please refer to manufacturer sample.

**THE VILLAGE**  
**MOORPARK**  
SHOPPING  
CENTER

**SIGN PROGRAM**

**Location:**

Southwest Corner  
Miller Parkway and  
New Los Angeles Avenue  
Moorpark, California

**Date:**

December 12, 2007



*LaCaze Consulting  
and Design*  
2601 Airport Drive  
Suite 300  
Torrance CA 90505

(T) 310.534.3311  
(F) 310.534.3003

SCALE: 1"=1'-0"

**TENANT  
ARCADE SIGN**

**Exhibit D**

**Sign Type** **M1**

**ENTRANCE MONUMENT SIGNS**

Quantity: Five (5).  
 Height: Five (5) feet.  
 Sign Area: Fifty-four (54) square feet overall. Combined area of Project ID and tenant panels is 24.5 square feet.

Construction: Aluminum fabrication with aluminum angle subframe. Internal 800ma H.O. illumination. Project I.D. is 1/2" thick clear acrylic push-thru copy/circle, with first-surface translucent vinyl decoration (colors t.b.d.)

Tenant I.D. Tenant panels are reverse pan aluminum, 2" deep. Tenant identification letters/logo are 1/2" thick white acrylic which may remain white or may be overlaid with one of the the three approved translucent vinyl colors shown in schedule to right. *No more than two tenant panels may utilize the same color on any one sign.*

**FINISH SCHEDULE**

**Paint Colors:**

- P1** Dunn Edwards 5358 "Ivory Oats"
- P2** Dunn Edwards 6056 "Buffalo Herd"
- P3** Dunn Edwards 5325 "Regency Creme"
- P4** Dunn Edwards 6367 "Covered In Platinum" LRV46

**Materials**

- M1** Coronado Stone: Eastern Mountain Ledge, "Lompoc"

**Tenant I.D. Colors:**

- V1** Calon 2500-2390 "Bright Blue" trans. vinyl overelay
- V2** Calon 2500-33 "Red" trans. vinyl overelay
- V3** Calon 2500-125 "Golden Yellow" trans. vinyl overelay
- W** White (acrylic left natural)

**Vinyl - Project I.D.**

- V4** Calon 2500-63 "Rust Brown" translucent vinyl
- V5** Calon 2500-59 "Dark Brown" translucent vinyl

*Colors shown are approximate. For actual colors please refer to manufacturer sample.*

**THE VILLAGE**  
  
**MOORPARK**  
 SHOPPING  
 CENTER

**SIGN PROGRAM**

**Location:**

Southwest Corner  
 Miller Parkway and  
 New Los Angeles Avenue  
 Moorpark, California

**Date:**

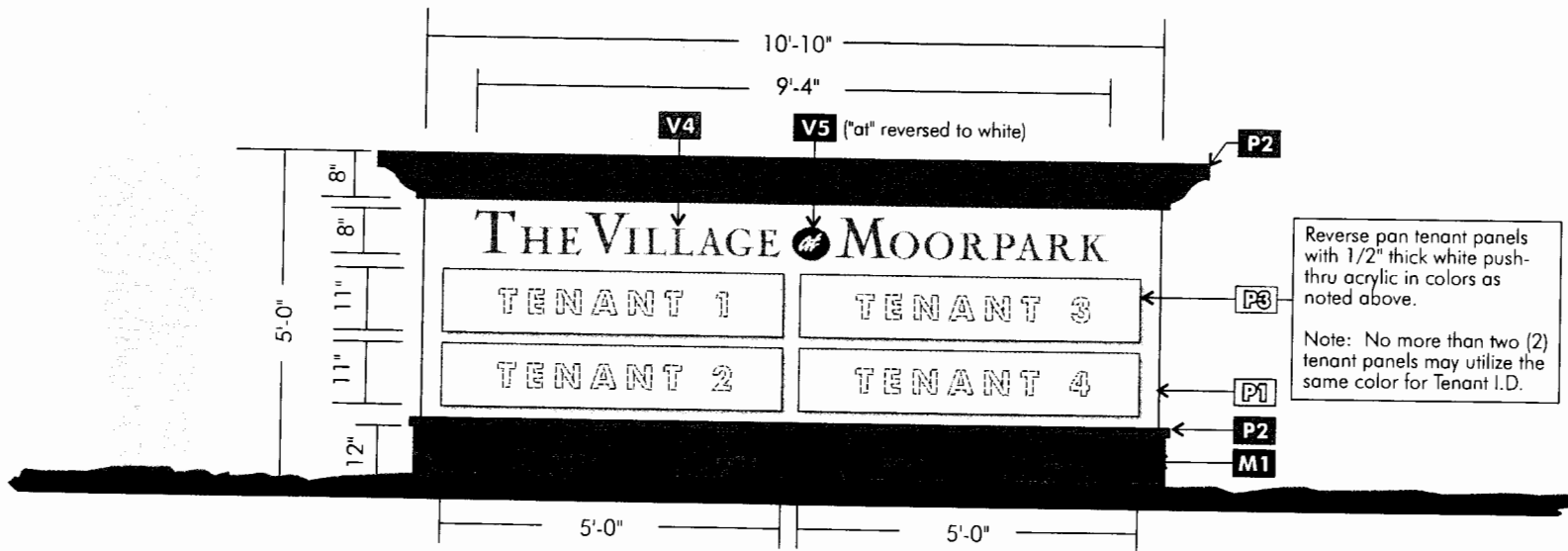
December 12, 2007



*LaCaze Consulting  
 and Design*  
 2601 Airport Drive  
 Suite 300  
 Torrance CA 90505

(T) 310.534.3311  
 (F) 310.534.3003

SCAKe: 3/8"=1'-0"



**SINGLE-FACED MONUMENT SIGN ELEVATION**

Note: Architect to specify sign locations and verify that there is adequate space available.

**MONUMENT  
 SIGN**

**Exhibit E**



**Sign Type** **M2**

**CORNER MONUMENT SIGN**

Quantity: One (1).  
 Height: Six (6) feet.  
 Sign Area: One hundred and twenty (120) square feet.  
 Construction: Project I.D. to be flat-cut-out aluminum, 1/4" thick, installed pin-mounted 1" off face of sign. Monument sign to be fabricated from aluminum with painted lightly textured finish. Trellis to be wood, painted as noted. Sign to be externally illuminated using ground-mounted flood lights.

**FINISH SCHEDULE**

**Paint Colors:**

- P1** Dunn Edwards 5263 "Sonora Shade"
- P2** Dunn Edwards 6056 "Buffalo Herd"
- P3** Dunn Edwards 6367 "Covered In Platinum" LRV46

**Materials**

- M1** Coronado Stone: Eastern Mountain Ledge, "Lompoc"

*Colors shown are approximate. For actual colors please refer to manufacturer sample.*

**THE VILLAGE**  
  
**MOORPARK**  
 SHOPPING  
 CENTER

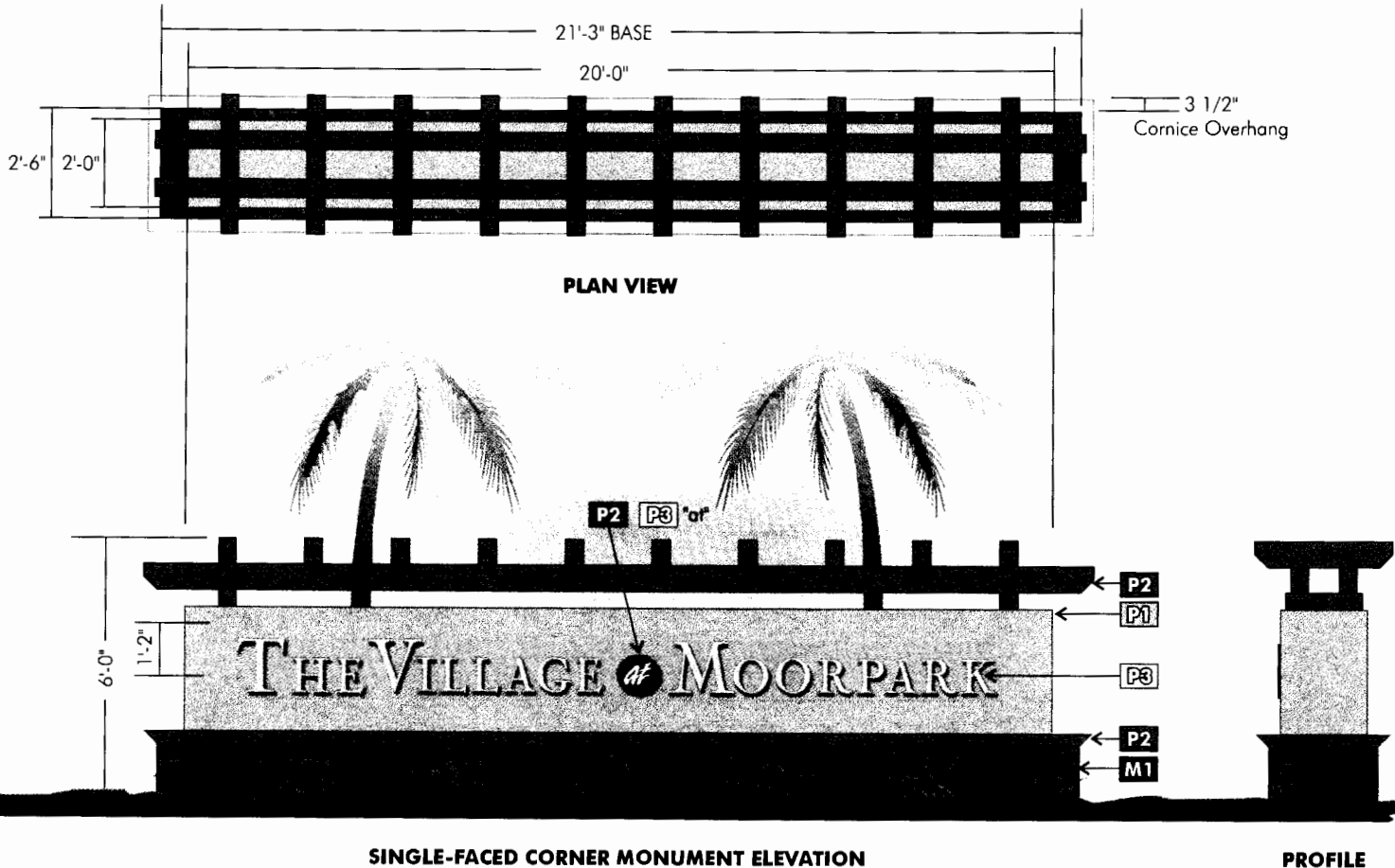
**SIGN PROGRAM**

**Location:**

Southwest Corner  
 Miller Parkway and  
 New Los Angeles Avenue  
 Moorpark, California

**Date:**

December 12, 2007



**SINGLE-FACED CORNER MONUMENT ELEVATION**

**PROFILE**

Note: Architect to specify precise sign location.



*LaCaze Consulting  
 and Design*  
 2601 Airport Drive  
 Suite 300  
 Torrance CA 90505

(T) 310.534.3311  
 (F) 310.534.3003

SCALE: 1/4"=1'-0"

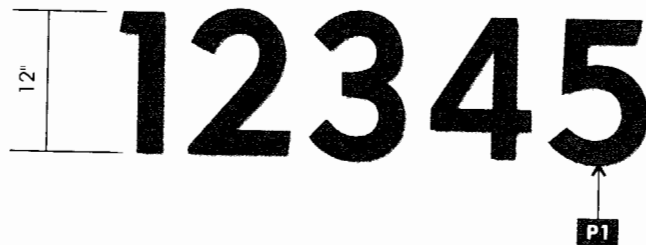
**MONUMENT  
 SIGN**

Exhibit F

**Sign Type BA**

**BUILDING ADDRESS NUMBERS**

- Minimum Quantity: One (1) set per address per street frontage.  
Numeral Height: Twelve (12) inches.  
Material: One (1) inch thick painted PVC.  
Illumination: Non-illuminated.  
Installation: Flush to building fascia using VHB and construction adhesive.  
Letter Style: Geometry 415 Medium.  
Color: As indicated below. Address color must provide sufficient contrast against building field color.



**FINISH SCHEDULE**

**Paint Colors:**

**P1** Dunn Edwards 6056 "Buffalo Herd"

THE VILLAGE  
*at*  
MOORPARK  
SHOPPING  
CENTER

**SIGN PROGRAM**

**Location:**

Southwest Corner  
Miller Parkway and  
New Los Angeles Avenue  
Moorpark, California

**Date:**

December 12, 2007



*LaCaze Consulting  
and Design*  
2601 Airport Drive  
Suite 300  
Torrance CA 90505

(T) 310.534.3311  
(F) 310.534.3003

**ADDRESS  
NUMBERS**

Exhibit G

**Sign Type SID**

**TENANT SUITE IDENTIFICATION (FRONT AND REAR)**

- Minimum Quantity: One (1) set per front and one (1) per rear entrance.
- Sizes: As indicated below.
- Materials: As indicated below.
- Illumination: Non-illuminated.
- Installation: Vinyl to be applied to interior side of window. Plaque to be installed flush to wall.
- Colors: As indicated below.

Note: Address(es) to be determined.

**THE VILLAGE**  
*At*  
**MOORPARK**  
SHOPPING  
CENTER

**SIGN PROGRAM**

**Location:**

Southwest Corner  
Miller Parkway and  
New Los Angeles Avenue  
Moorpark, California

**Date:**

December 12, 2007

**FINISH SCHEDULE**

**Paint Colors:**

**P1** Dunn Edwards 6056 "Buffalo Herd"



*LaCaze Consulting  
and Design*

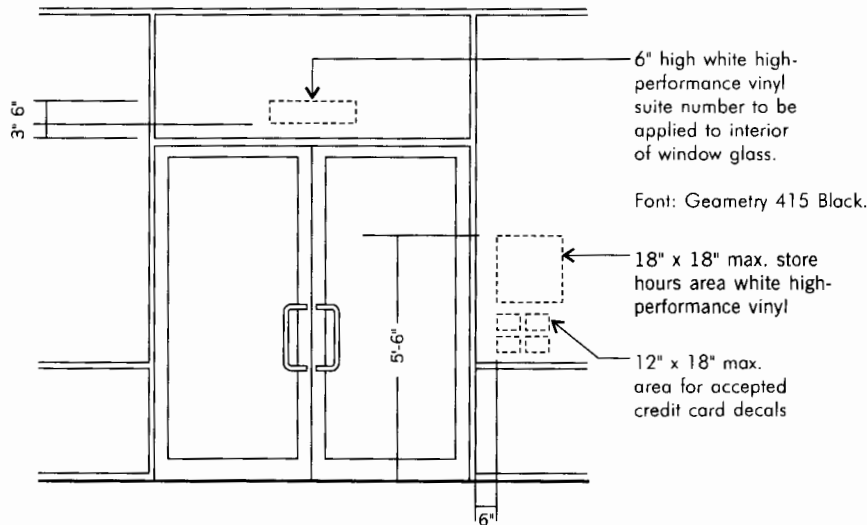
2601 Airport Drive  
Suite 300  
Torrance CA 90505

TEL 310.534.3311  
TEL 310.534.3003

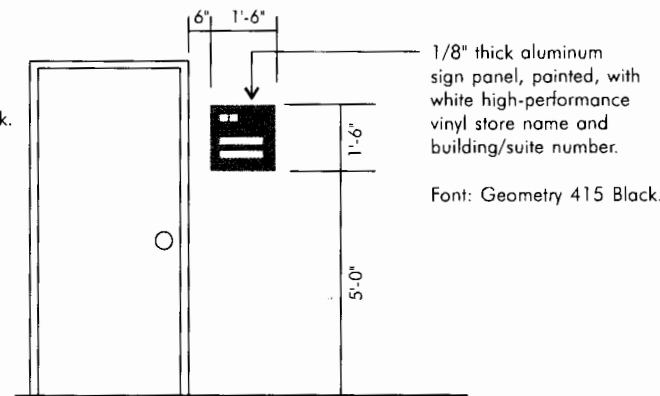
SCALE: 1/4"=1'-0"

**SIGN TYPE - SID**  
**Suite Identification**

Exhibit H



**TYPICAL FRONT ENTRANCE ELEVATION**



**TYPICAL REAR ENTRANCE ELEVATION**

THE VILLAGE  
*at*  
 MOORPARK  
 SHOPPING  
 CENTER

**SIGN PROGRAM**

**Location:**

Southwest Corner  
 Miller Parkway and  
 New Los Angeles Avenue  
 Moorpark, California

**Date:**

December 12, 2007

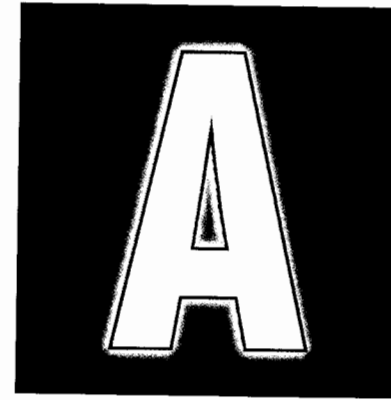


*LaCaze Consulting  
 and Design*

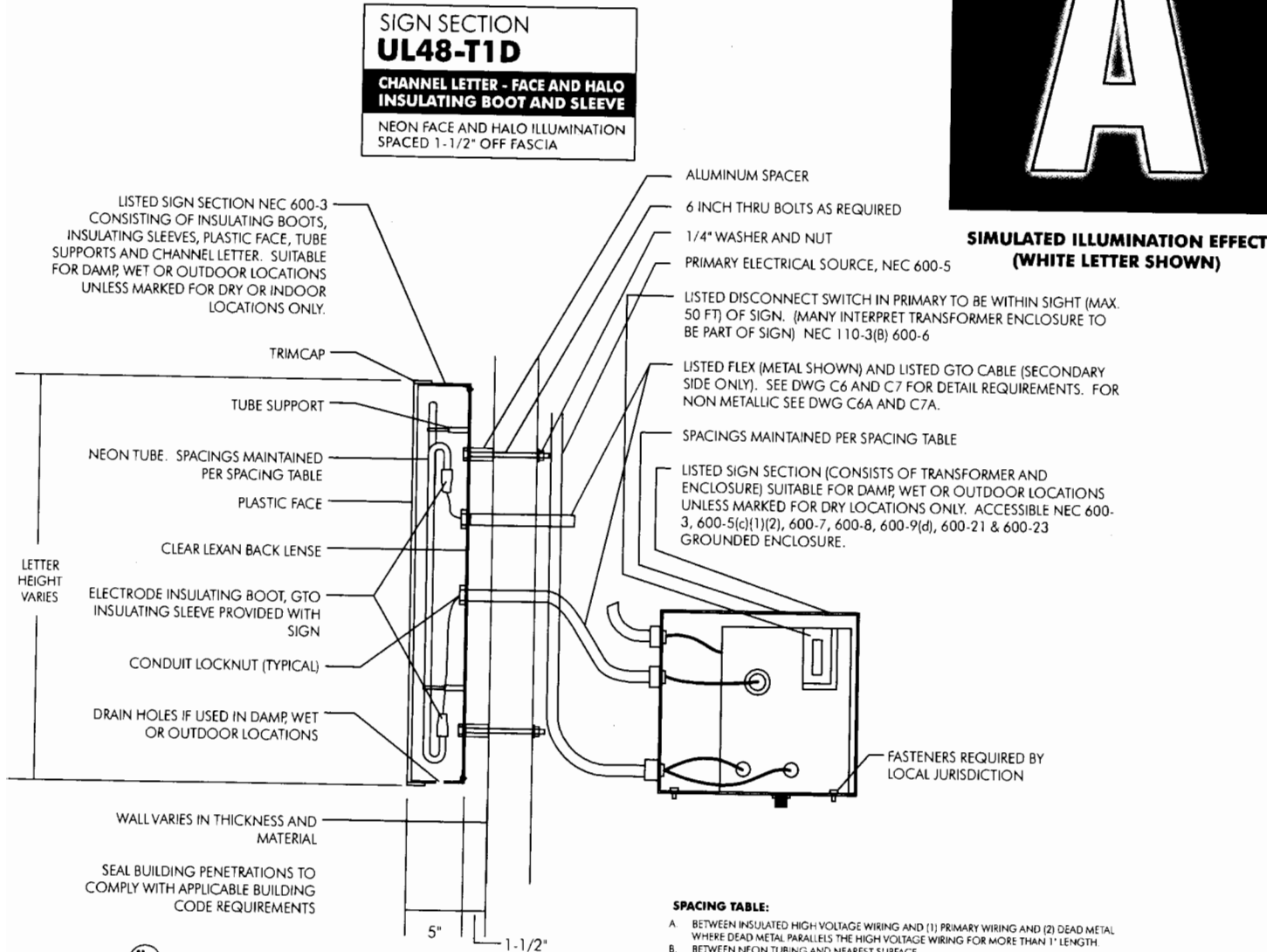
2601 Airport Drive  
 Suite 300  
 Torrance CA 90505

(T) 310.534.3311

(F) 310.534.3003



**SIMULATED ILLUMINATION EFFECT  
 (WHITE LETTER SHOWN)**



**SPACING TABLE:**

- A. BETWEEN INSULATED HIGH VOLTAGE WIRING AND (1) PRIMARY WIRING AND (2) DEAD METAL WHERE DEAD METAL PARALLELS THE HIGH VOLTAGE WIRING FOR MORE THAN 1' LENGTH.
- B. BETWEEN NEON TUBING AND NEAREST SURFACE.
- C. BETWEEN UNINSULATED HIGH-VOLTAGE PARTS AND (1) DEAD METAL AND (2) INSULATED HIGH VOLTAGE OR SUPPLY CONDUCTORS.
- D. BETWEEN UNINSULATED HIGH-VOLTAGE PARTS AND (1) OTHER INSULATED HIGH-VOLTAGE PARTS AND (2) UNINSULATED SUPPLY AND LOW VOLTAGE PARTS.

VOLTAGE	A	B	C	D
1001 TO 5000	1/2 INCH	1/4 INCH	3/4 INCH	1 INCH
5001 TO 10000	3/4 INCH	1/4 INCH	1-1/8 INCH	1-1/2 INCH
10001 TO 15000	1 INCH	1/4 INCH	1-1/2 INCH	2 INCH

**LISTING MARKS:**

LISTING MARK SIGN SECTION LABEL SHALL BE ON EACH LETTER AND TRANSFORMER ENCLOSURE. THE FIRST BLANK SPACE IDENTIFIES THE NUMBER OF EACH SIGN SECTION. THE SECOND BLANK SPACE INDICATES THE TOTAL NUMBER OF SIGN SECTIONS.



(OR OTHER ACCREDITED TESTING LABORATORY)

ELECTRIC SIGN SECTION

NO. XX-123456

OR

**SIGN SECTION  
 FACE AND HALO ILLUM.**

Exhibit I

THE VILLAGE  
*at*  
**MOORPARK**  
 SHOPPING  
 CENTER

**SIGN PROGRAM**

**Location:**

Southwest Corner  
 Miller Parkway and  
 New Los Angeles Avenue  
 Moorpark, California

**Date:**

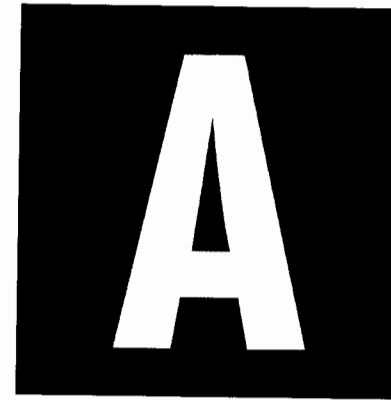
December 12, 2007



*LaCaze Consulting  
 and Design*

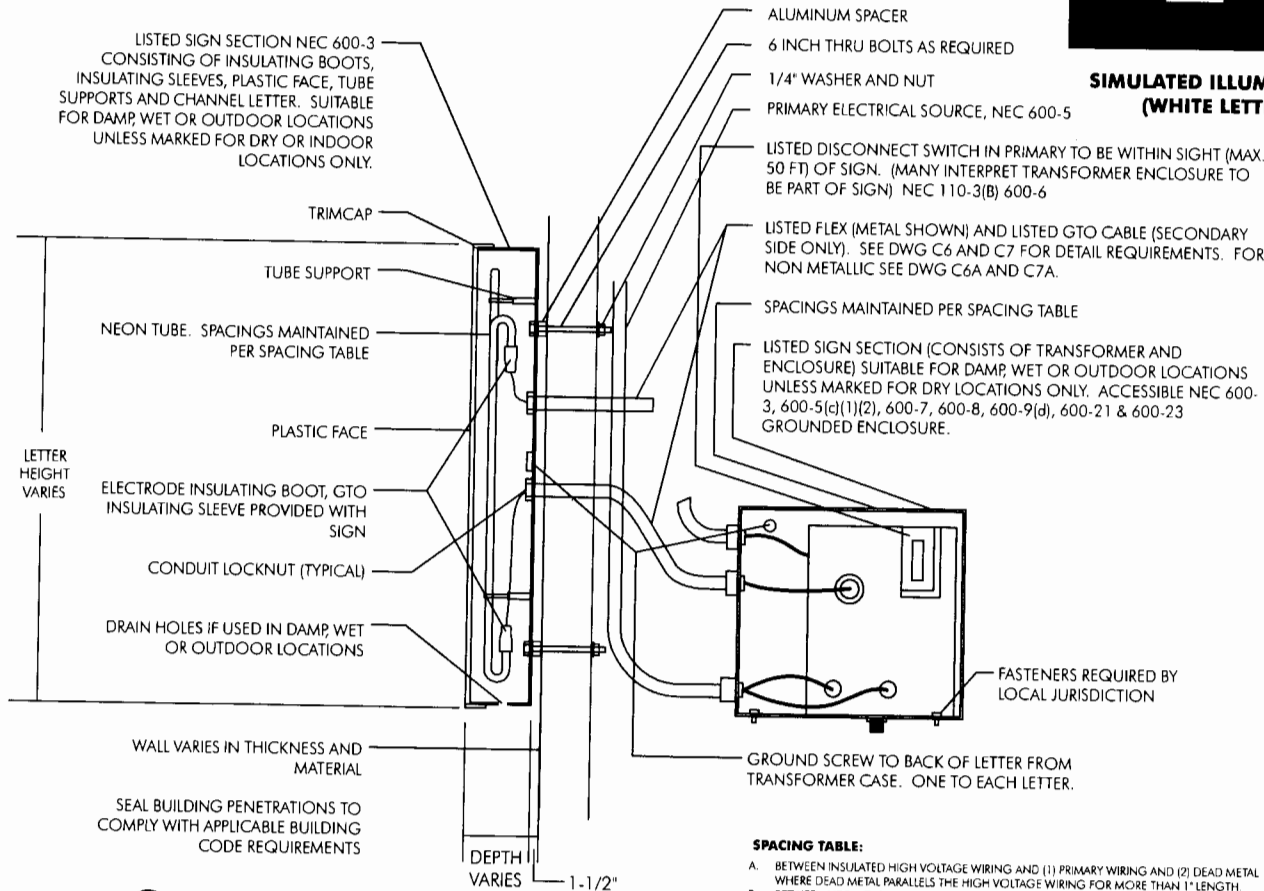
2601 Airport Drive  
 Suite 300  
 Torrance CA 90505

[(T)] 310.534.3311  
 [(F)] 310.534.3003



**SIMULATED ILLUMINATION EFFECT  
 (WHITE LETTER SHOWN)**

**SIGN SECTION  
 UL48-T1D**  
**CHANNEL LETTER - FACE LIT  
 INSULATING BOOT AND SLEEVE**  
 INTERNAL NEON ILLUMINATION  
 SPACED 1/2" OFF FASCIA



- SPACING TABLE:**
- A. BETWEEN INSULATED HIGH VOLTAGE WIRING AND (1) PRIMARY WIRING AND (2) DEAD METAL WHERE DEAD METAL PARALLELS THE HIGH VOLTAGE WIRING FOR MORE THAN 1" LENGTH.
  - B. BETWEEN NEON TUBING AND NEAREST SURFACE.
  - C. BETWEEN UNINSULATED HIGH-VOLTAGE PARTS AND (1) DEAD METAL AND (2) INSULATED HIGH VOLTAGE OR SUPPLY CONDUCTORS.
  - D. BETWEEN UNINSULATED HIGH-VOLTAGE PARTS AND (1) OTHER INSULATED HIGH-VOLTAGE PARTS AND (2) UNINSULATED SUPPLY AND LOW VOLTAGE PARTS.

VOLTAGE	A	B	C	D
1001 TO 5000	1/2 INCH	1/4 INCH	3/4 INCH	1 INCH
5001 TO 10000	3/4 INCH	1/4 INCH	1-1/8 INCH	1-1/2 INCH
10001 TO 15000	1 INCH	1/4 INCH	1-1/2 INCH	2 INCH

**LISTING MARKS:**

LISTING MARK SIGN SECTION LABEL SHALL BE ON EACH LETTER AND TRANSFORMER ENCLOSURE. THE FIRST BLANK SPACE IDENTIFIES THE NUMBER OF EACH SIGN SECTION. THE SECOND BLANK SPACE INDICATES THE TOTAL NUMBER OF SIGN SECTIONS.



(OR OTHER ACCREDITED TESTING LABORATORY)

ELECTRIC SIGN SECTION

NO. XX-123456

OR

**SIGN SECTION  
 INTERNAL ILLUM.**

Exhibit J