

DRA 2020 Quick Start Guide

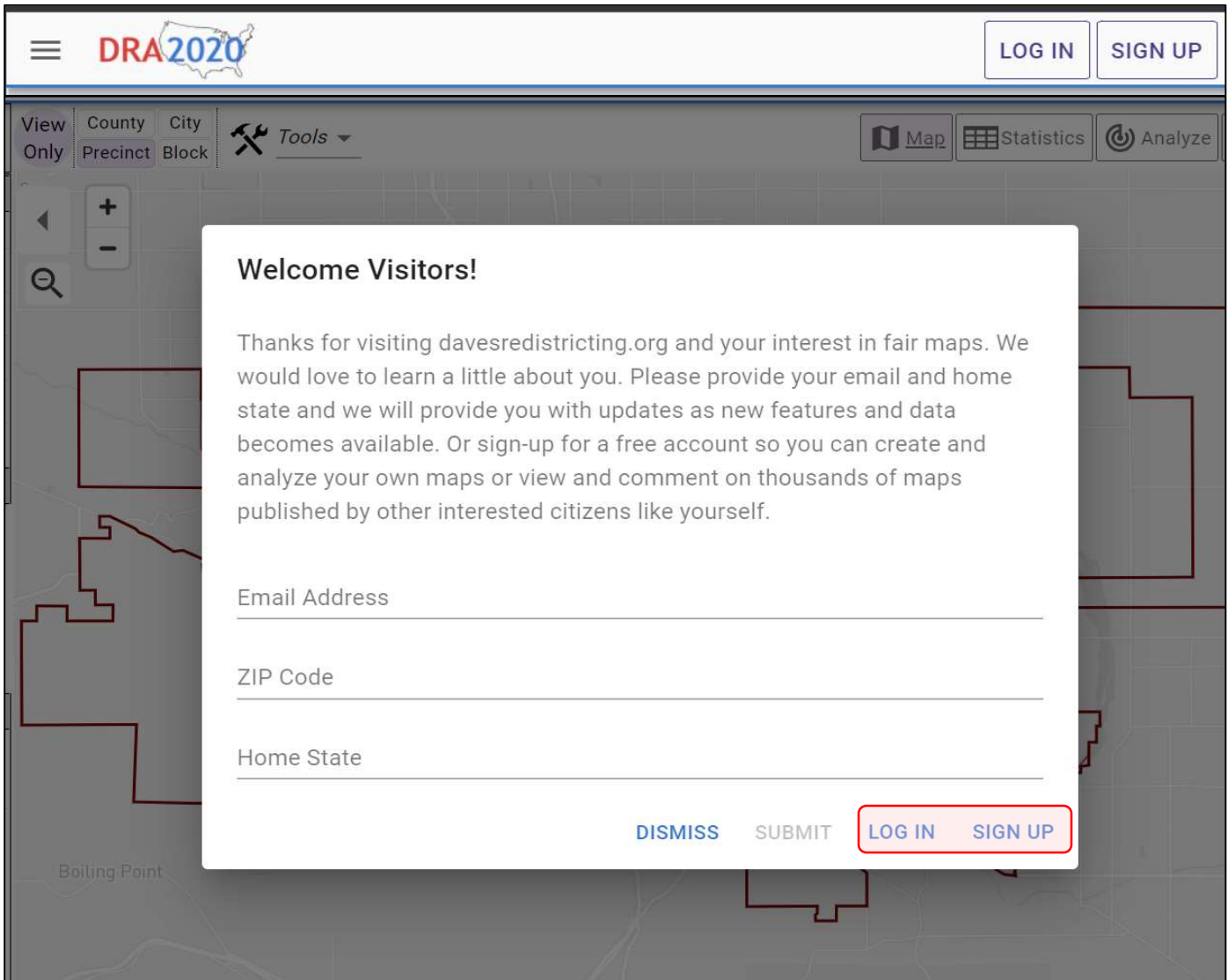
Prepared by National Demographics Corp.

Step 1: Create User Account

Click the DRA 2020 link provided on your jurisdiction's redistricting website or visit davesredistricting.org.

If this is your first time on the site, you'll need to create an account. Click the **"Sign Up"** button to enter your email address and create an account.

If you already have a user ID and password, click **"Log In."** Once you have logged in to the site, you can start drawing a map.



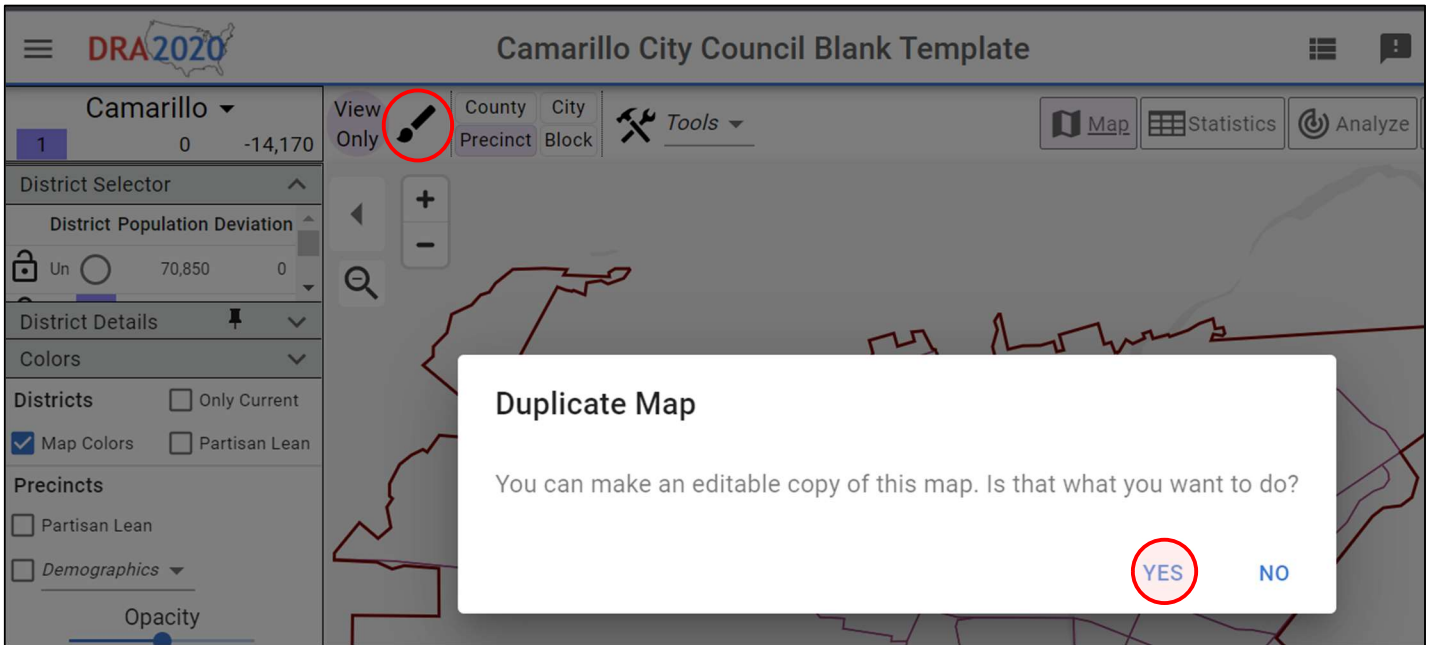
DRA 2020 Quick Start Guide

Prepared by National Demographics Corp.

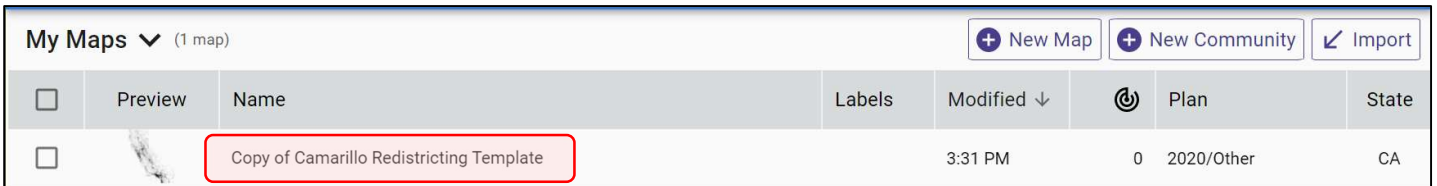
Step 2: Open the Map Template

Click the DRA 2020 link on your jurisdiction’s redistricting website to open the mapping tool template. It takes several seconds to load the page, so be patient!

Once the template has loaded, click the **Paintbrush** icon at the top of the page. When prompted to duplicate the map, click “Yes.”



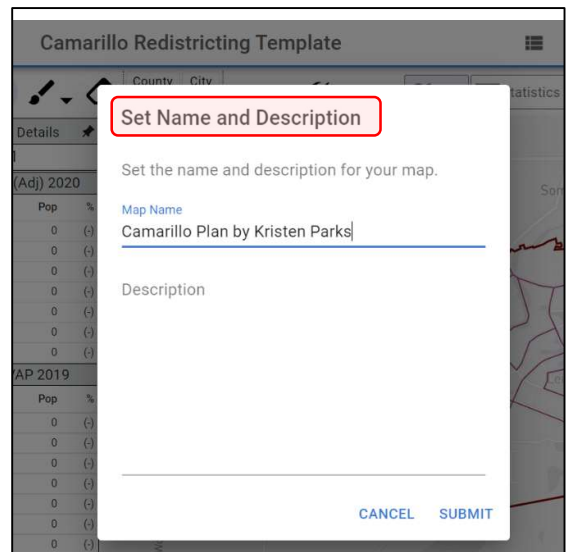
You will now be directed to a page titled “**My Maps.**” Double click on the map named “Copy of...” to open your blank template and begin drawing districts.



Step 3: Name Your Map

After you’ve opened the template, click on the map title at the top of the page. In the popup window, enter a name for your map.

We suggest using your name in the title so you will be able to recognize your map when it is presented for consideration.



DRA 2020 Quick Start Guide

Prepared by National Demographics Corp.

Step 4: Draw Districts

Use the radio buttons in the **District Selector** box on the left side of the page to choose which district to draw.

After selecting a district, click the **Paintbrush** icon at the top of the page to enter **Paint Mode**. Click precincts on the map to add them to your selected district.

District Selector

District	Population	Deviation
Un	68,609	0
1	2,241	-11,929
2	0	-14,170
3	0	-14,170
4	0	-14,170
5	0	-14,170

District Details

District: 1

Total Pop (Adj) 2020

Pop	%
Total	2,241 100.0%
White	879 39.2%
Hispanic	637 28.4%
Black	391 17.4%
Asian	346 15.4%
Native	74 3.3%
Pacific	60 2.7%

Citizen VAP 2019

Pop	%
Total	1,615 100.0%
White	740 45.8%
Hispanic	370 22.9%
Black	240 14.9%
Asian	190 11.8%
Native	40 2.5%
Pacific	0 0.0%

Precinct Details

Total Pop (Adj) 2020

Pop	%
Total	0 (-)
White	0 (-)
Hispanic	0 (-)
Black	0 (-)
Asian	0 (-)
Native	0 (-)
Pacific	0 (-)

Citizen VAP 2019

Pop	%
Total	0 (-)
White	0 (-)
Hispanic	0 (-)
Black	0 (-)
Asian	0 (-)
Native	0 (-)
Pacific	0 (-)

In the example above, one precinct has been added to District 1.

To exit Paint Mode, click the **Hand** icon. This opens the **Pan** tool, which you can use to move the map by clicking and dragging across the screen.

To correct the boundaries of your districts, click the **Eraser** icon at the top corner of the page. Click and drag to remove units from that district. You can also click the **Undo/Redo** buttons to revert your most recent modifications to the map.

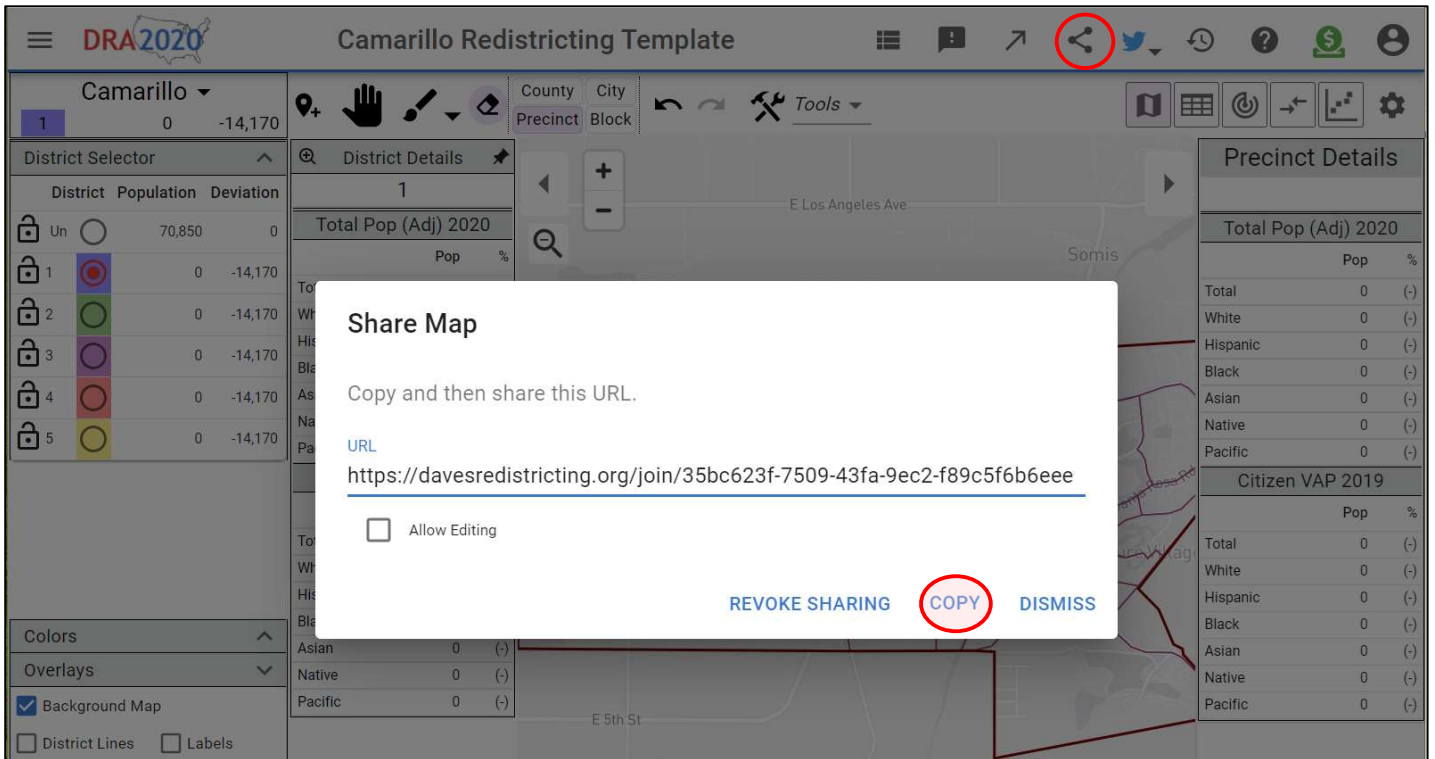
To draw another district, select a new district from the **District Selector** box. Your goal, at the very least, is to assign all the precincts to districts so that each district has about the same population, and to make sure each district is contiguous (all parts are connected).

DRA 2020 Quick Start Guide

Prepared by National Demographics Corp.

Step 5: Submit Your Plan

When you're done, use the **Share** button at the top of the page to generate a link to your map. Email the link to the email address provided on your jurisdiction's redistricting website. You will then receive an email confirmation that your map has been submitted.



PLEASE NOTE: If you do not email your map, it will not be entered into the public record for consideration. DRA is an awesome tool, but it does not include any notification system to alert us when maps are completed.